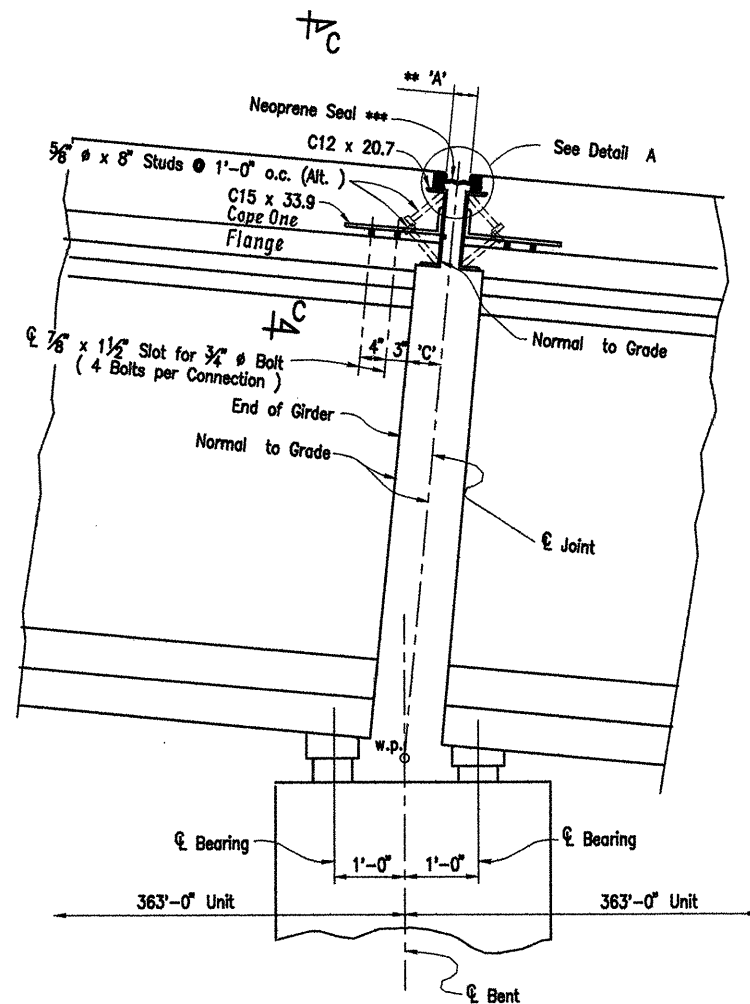
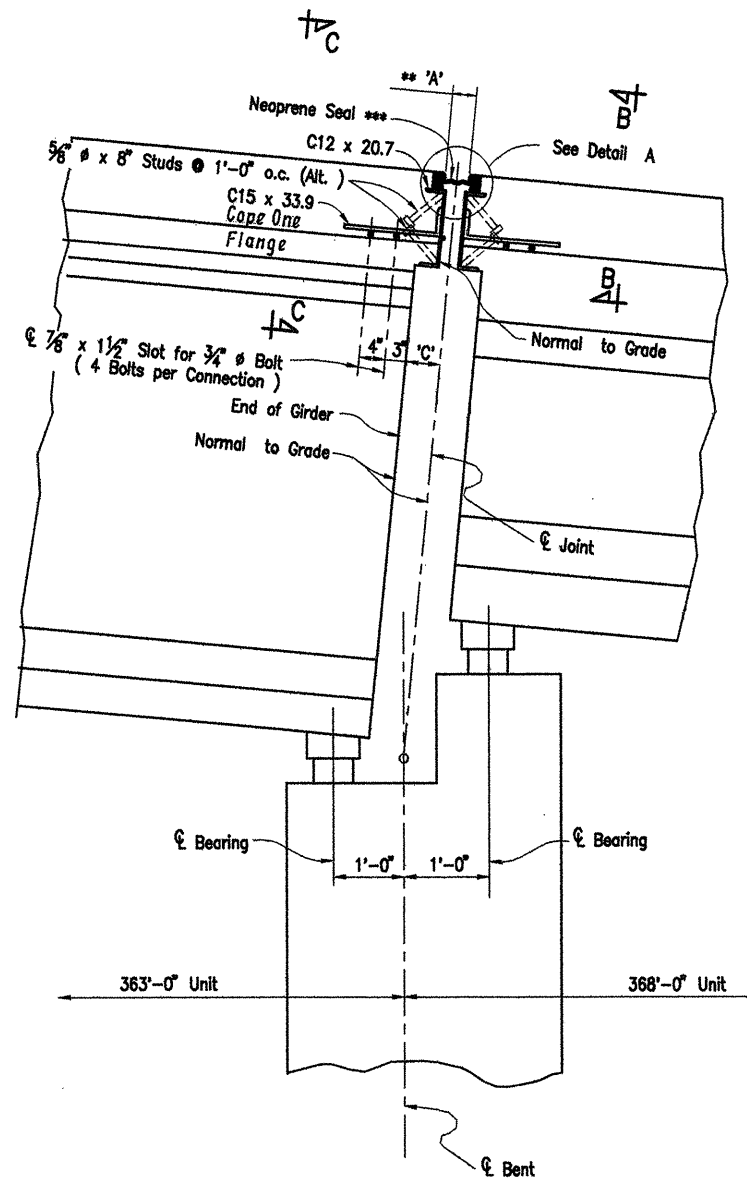


COMPANY\1999 JOBS\99-044 AHTD\WHITERIVER\JOB 110394\exp\joint\ait1 ACAD SCALE: 3/4"=1'-0"

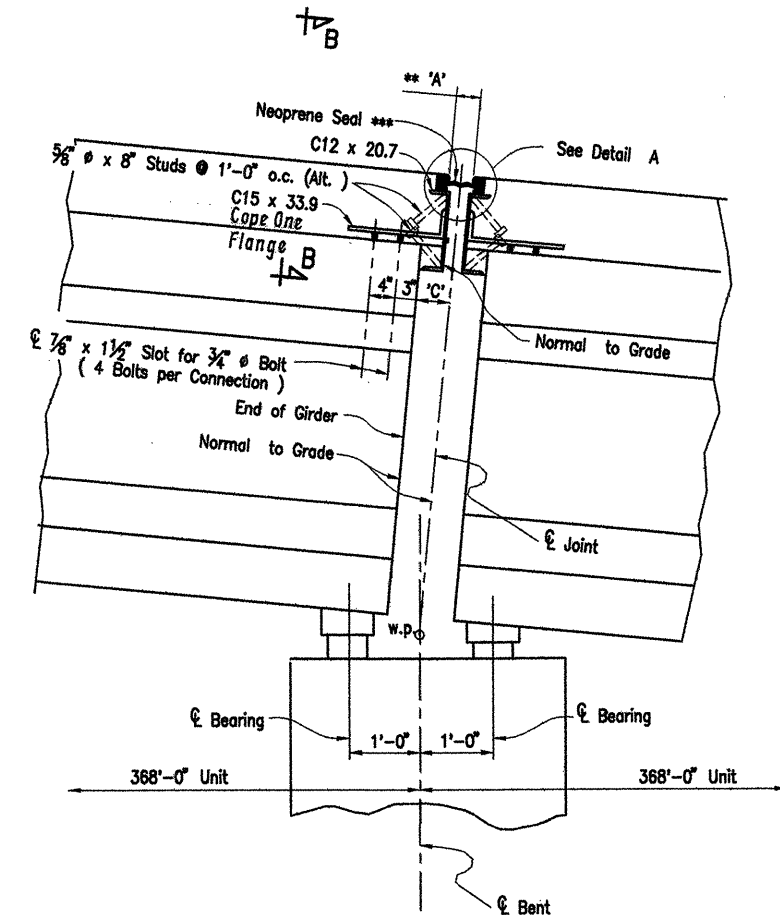
DATE REVISED	DATE FILMED	DATE REVISED	DATE FILMED	FED. ROAD NO.	STATE	FED. AID PROJ. NO.	SHEET NO.	TOTAL SHEETS
					ARK.			
				JOB NO.		110394	96	196
				06830		EXP. JOINT		42008



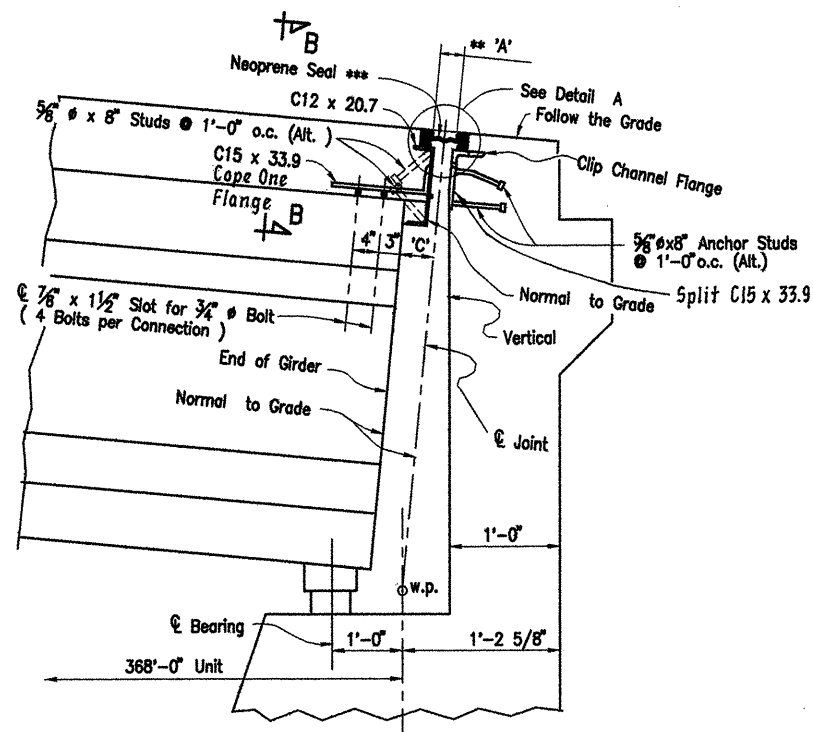
JOINT DETAILS AT BENT 86
N.T.S.



JOINT DETAILS AT BENT 89
N.T.S.



JOINT DETAILS AT BENT 93
N.T.S.



DETAIL OF JOINT AT END BENT 97
N.T.S.

Note: For Sections B-B and C-C, See Dwg. No. 42009
For Detail A, See Dwg. No. 42009
** 3" Strip Seal Joints shown on dwg's 41956 to 41959 represent the 3" Jt. @ 60°F.
*** Strip Seal Joint Components shall be capable of moving between the Amin. @ 120°F and Amax. @ 0°F.

ALTERNATE NO. 1
WHITE RIVER BRIDGE

DETAILS OF EXPANSION JOINTS
(SHEET 1 OF 4)

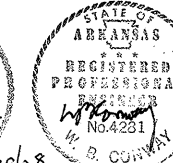
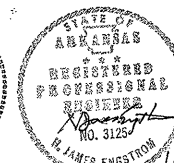
WHITE RIVER STR. & APPRS.
(CLARENDON) (PH. II) (F)
MONROE COUNTY

ROUTE 79 SEC. 13

ARKANSAS STATE HIGHWAY COMMISSION
LITTLE ROCK, ARK.

Engstrom/Modjeski and Masters, Inc.

DRAWN BY: PMR DATE: Nov. 07 FILENAME: b1103941_e1
CHECKED BY: GPT DATE: Nov. 01 SCALE: 3/4"=1'-0"
DESIGNED BY: YO DATE: Nov. 01
BRIDGE NO. 06830 DRAWING NO. 42008



BRIDGE ENGINEER